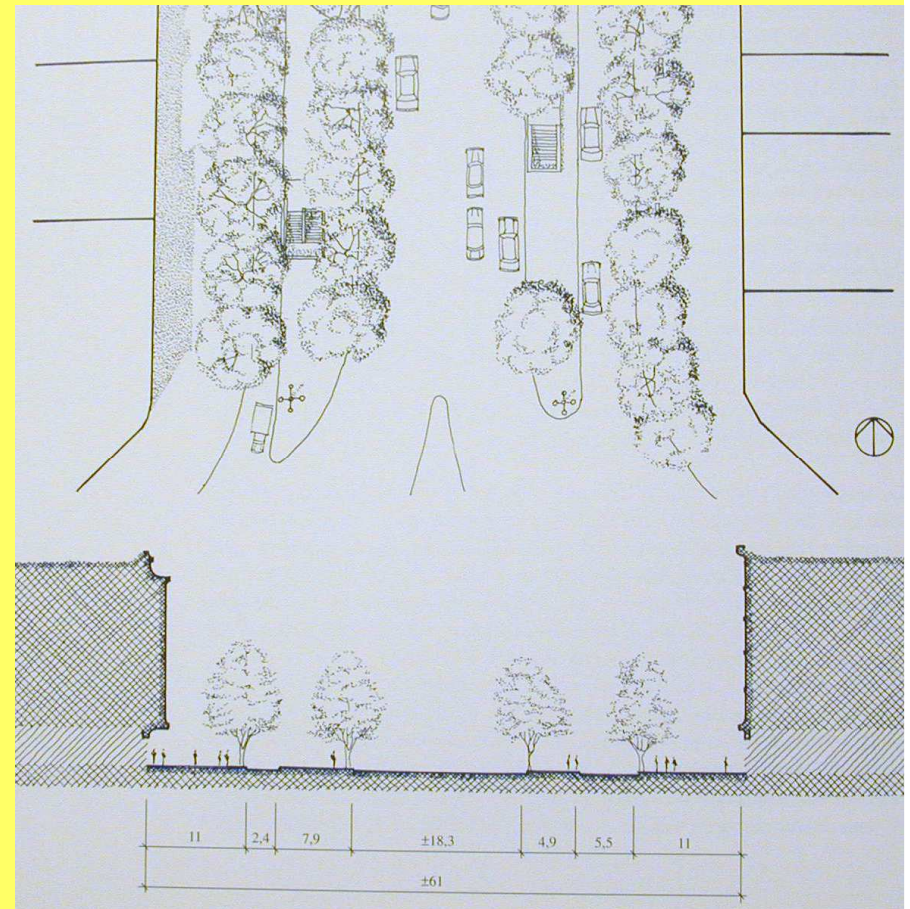
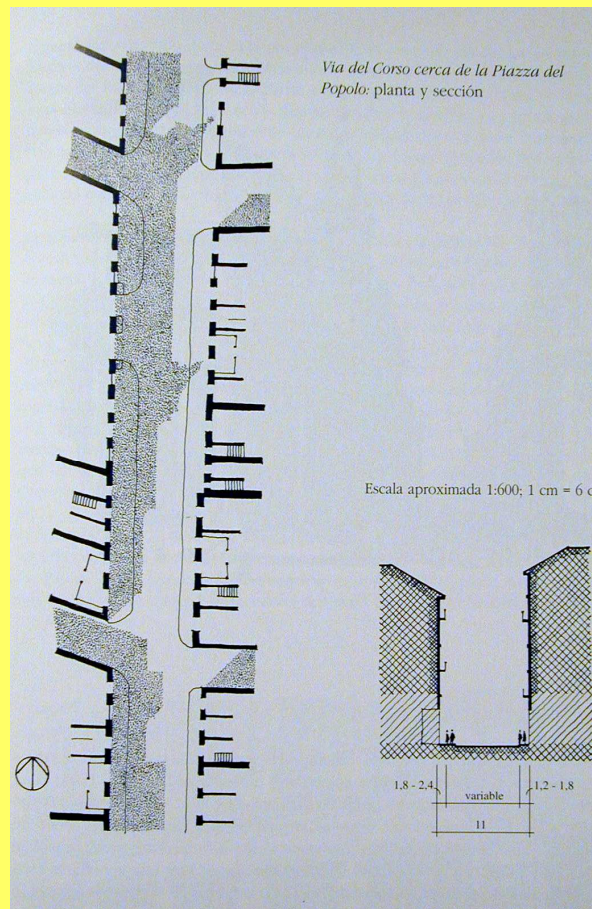
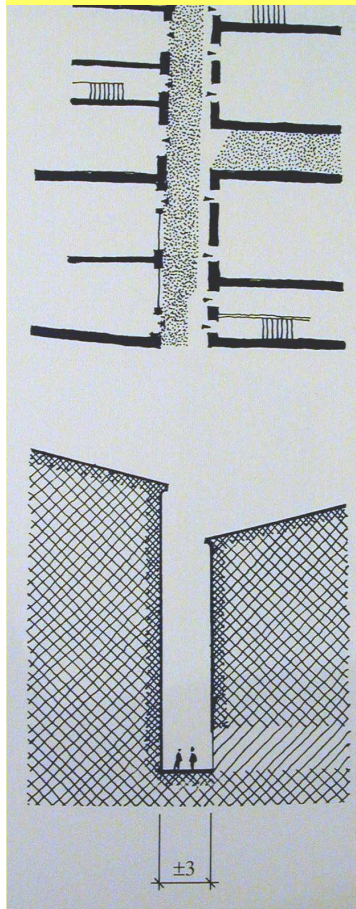


# ESPAZIOAREN IRUDIA: LUZERAKOA- PERSPEKTIBA





# ZEHARKAKOA-PROPORZIOA





ALBOKOA:  
ETXEEN  
AURREKALDEAK



PLANTA-LUR ZORUA

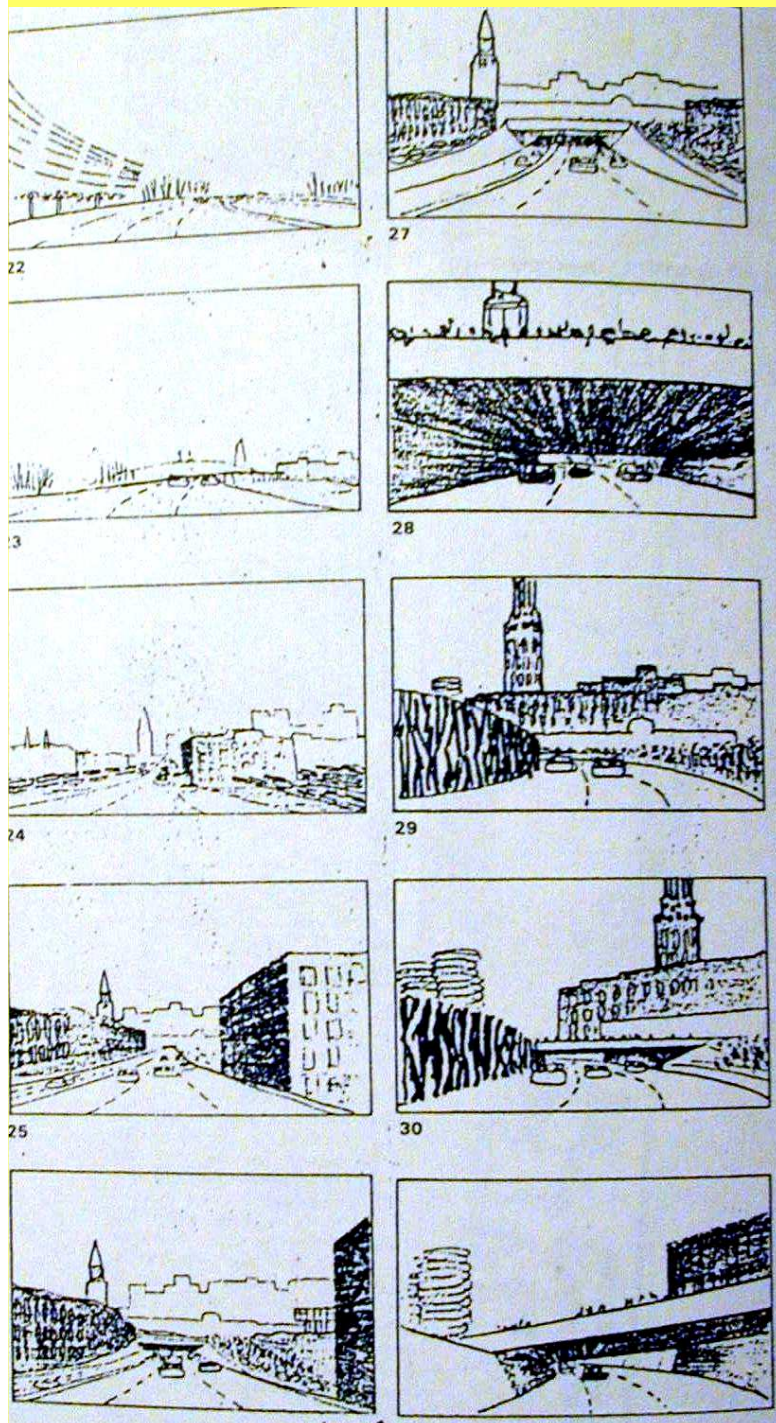




# SABAIA

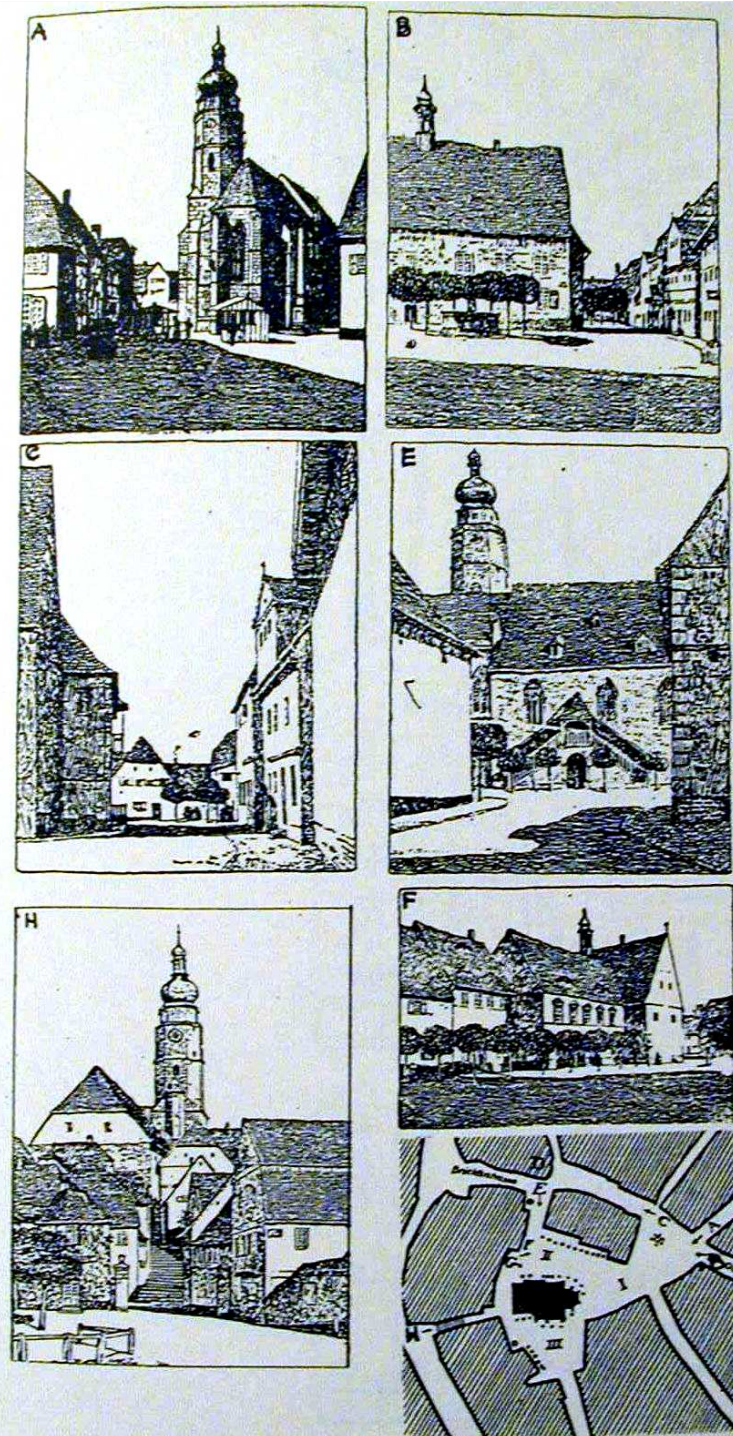




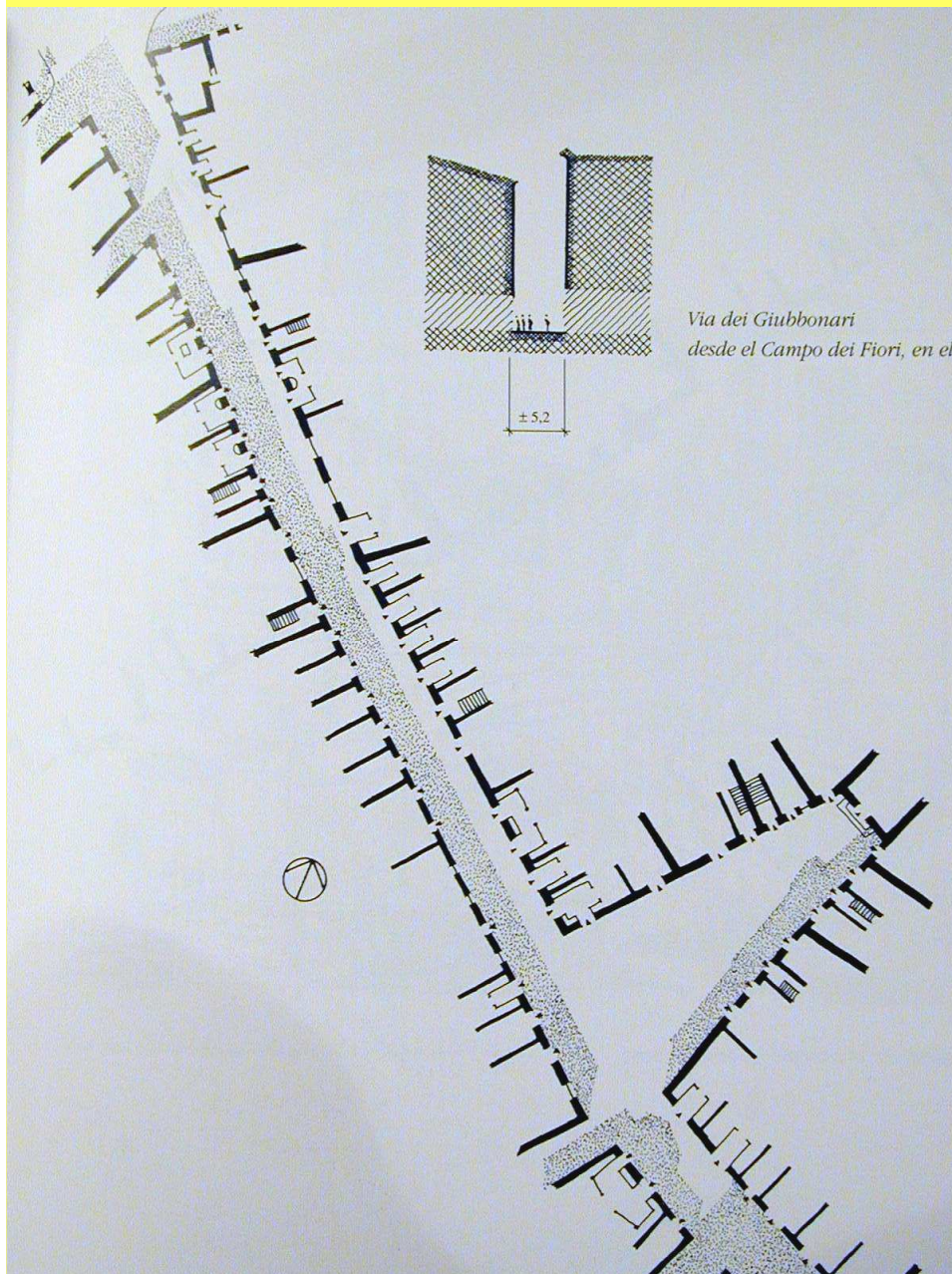


SEKUENTZIA:  
IKUSKERA  
DINAMIKOA

IKUSPUNTUA:  
OINEZKOA  
EDO  
BEREBILEZKOA







Via dei Giubbonari  
desde el Campo dei Fiori, en el



A lo largo de la Via dei Giubbonari

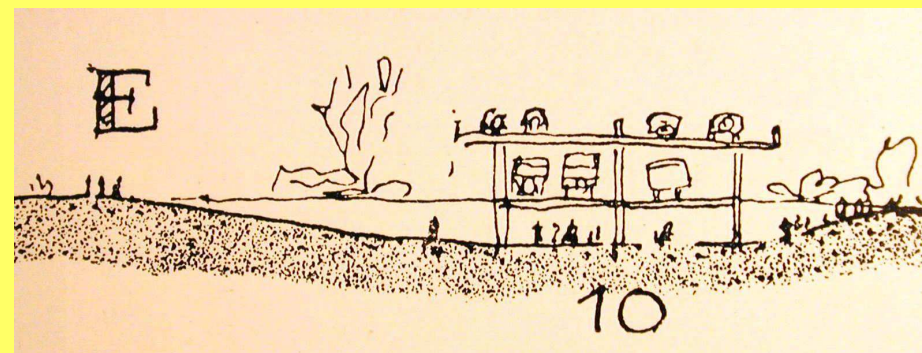
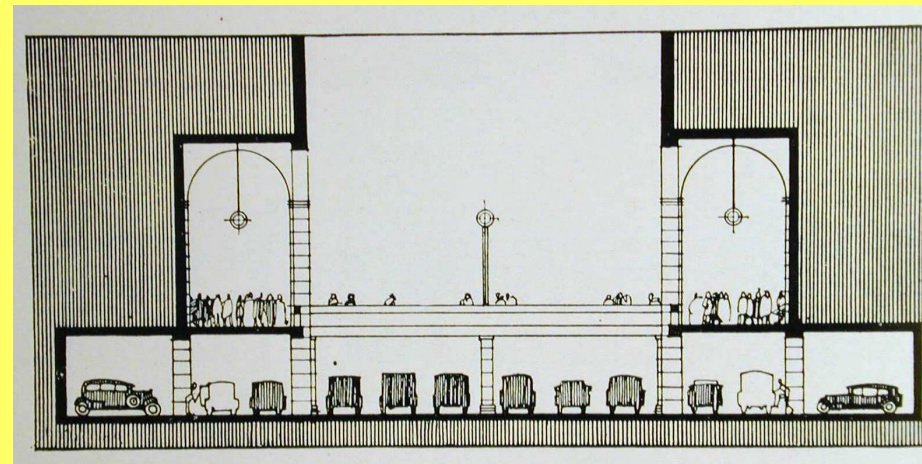
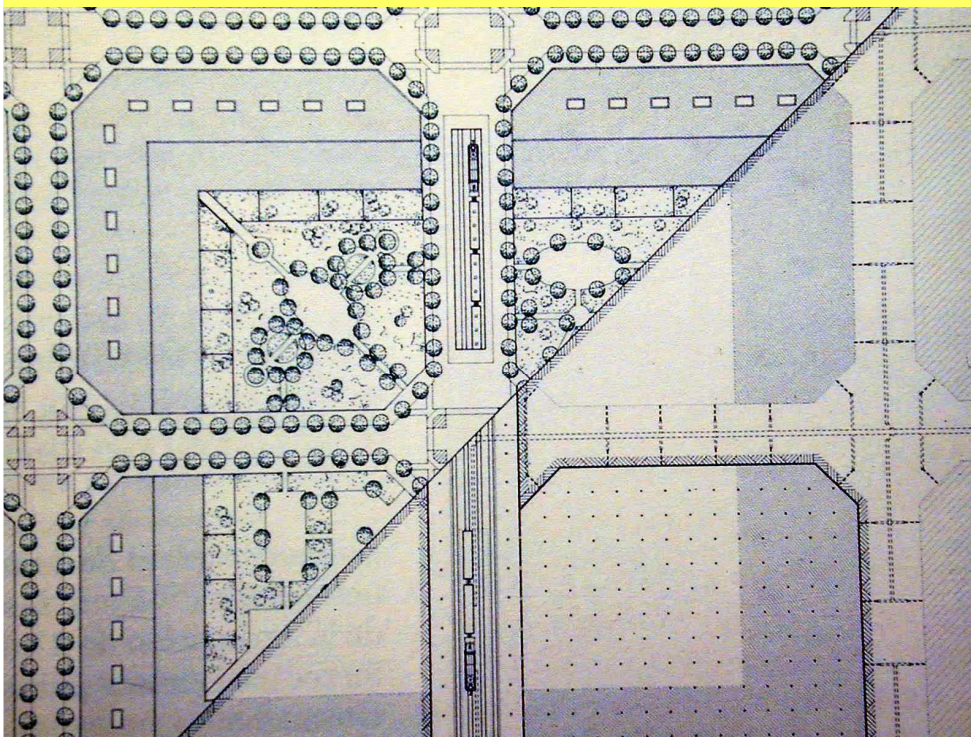
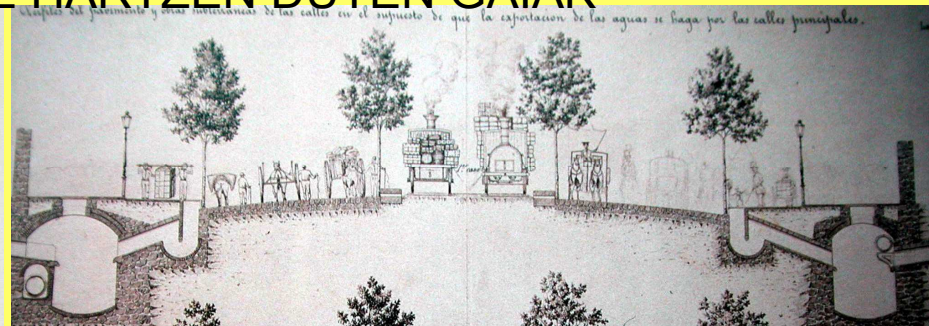
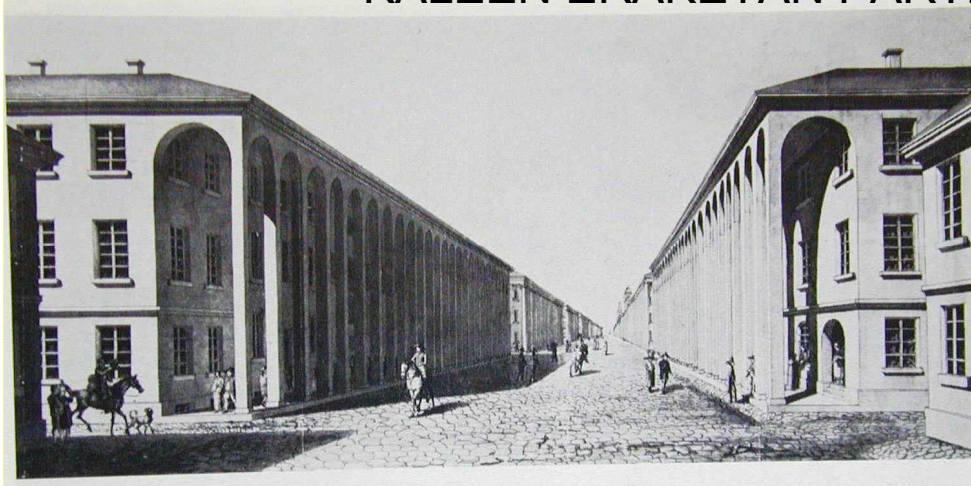




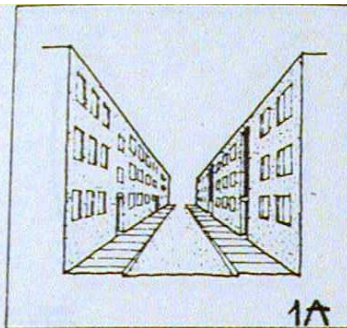


# KALEEN KONPOSIZIOAREN TEORIAK

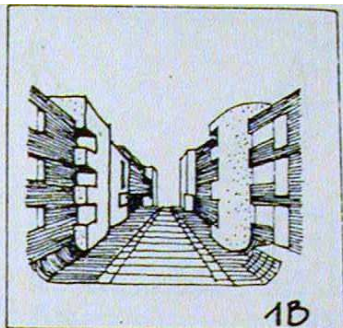
## KALEEN ERAKETAN PARTE HARTZEN DUTEN DUTEN GAIAK



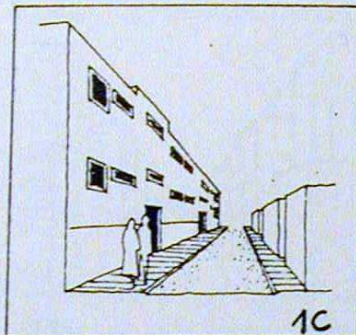




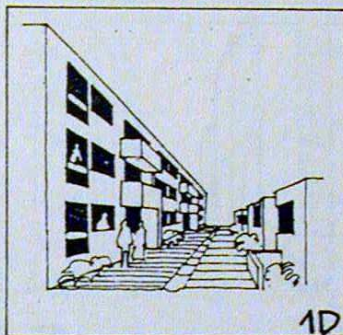
1A



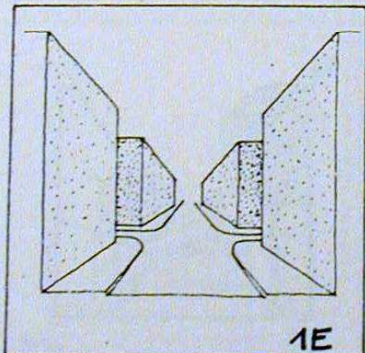
1B



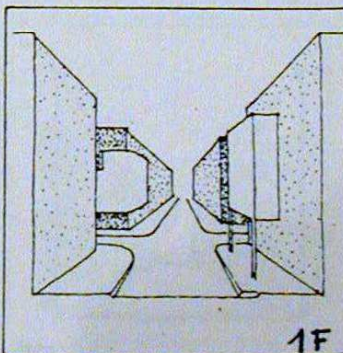
1C



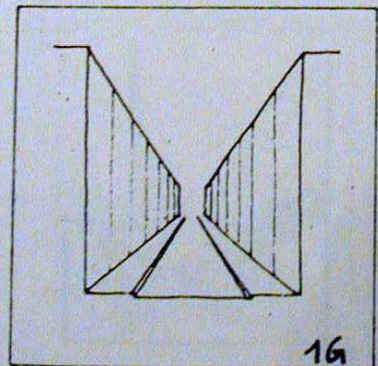
1D



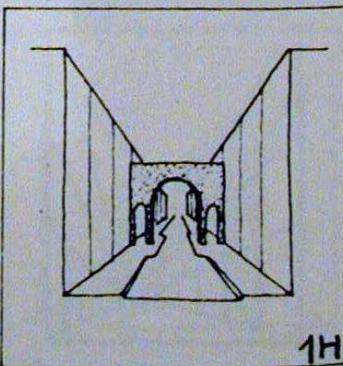
1E



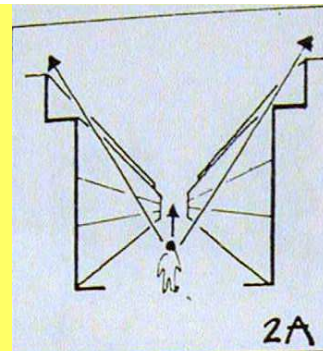
1F



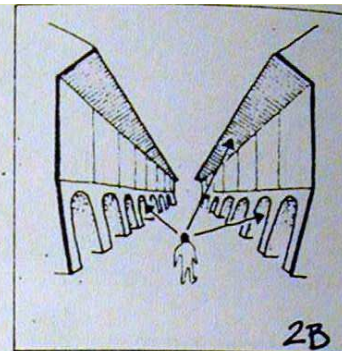
1G



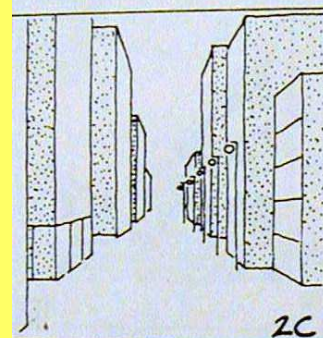
1H



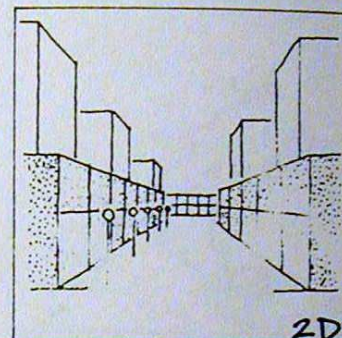
2A



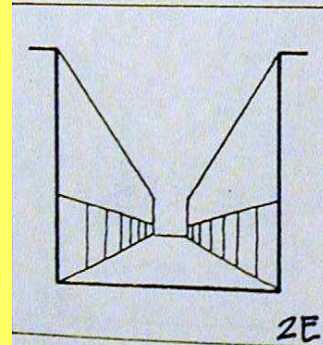
2B



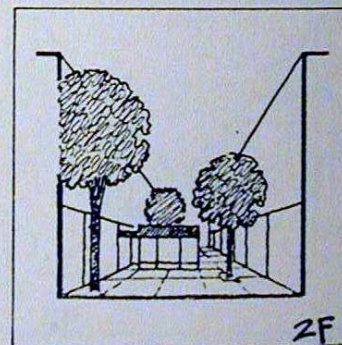
2C



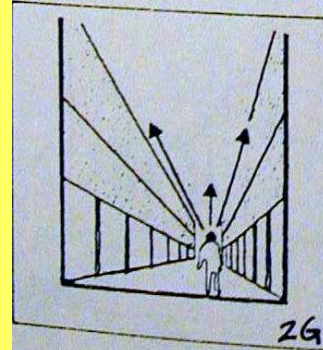
2D



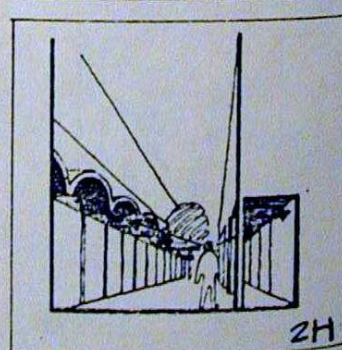
2E



2F

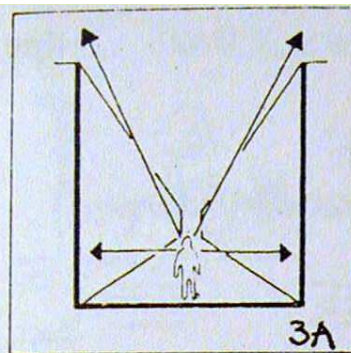


2G

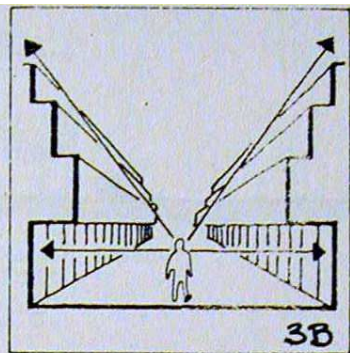


2H

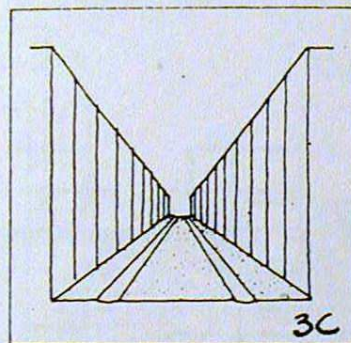




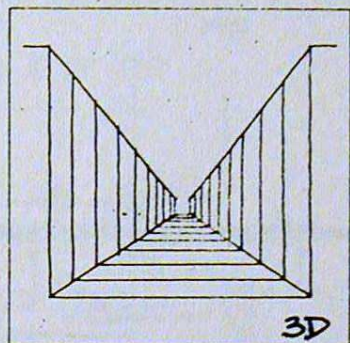
3A



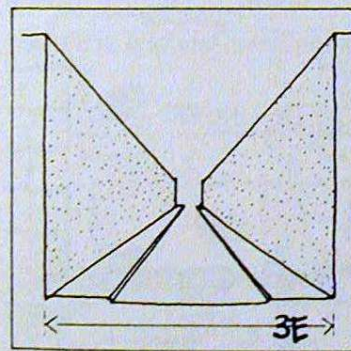
3B



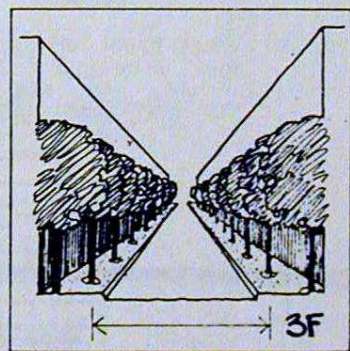
3C



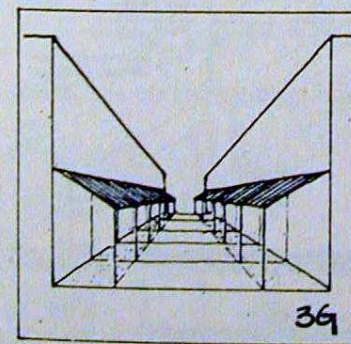
3D



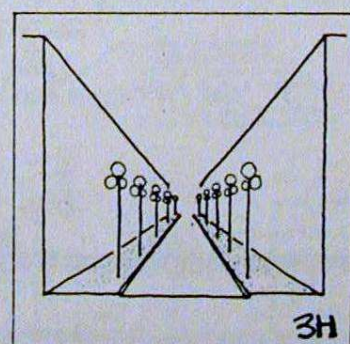
3E



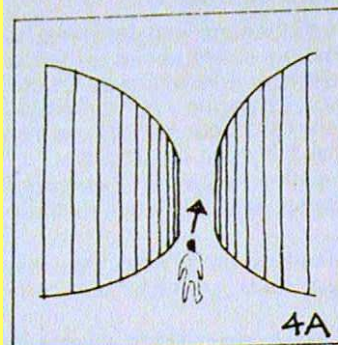
3F



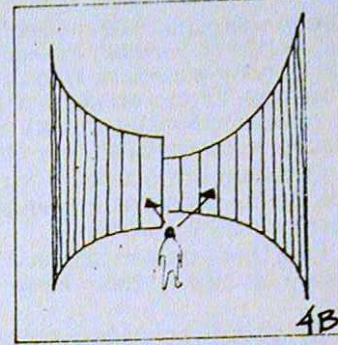
3G



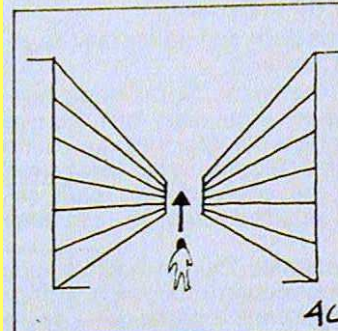
3H



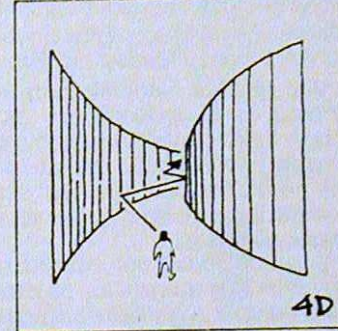
4A



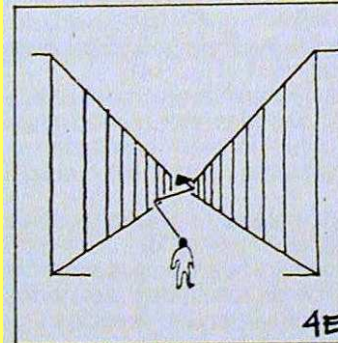
4B



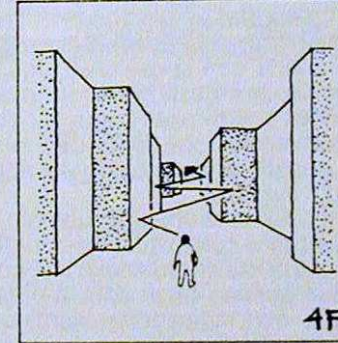
4C



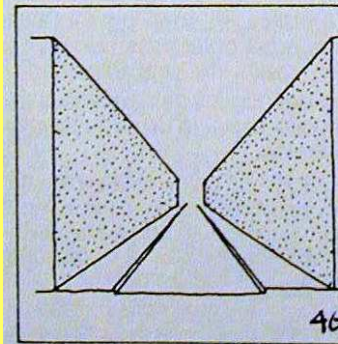
4D



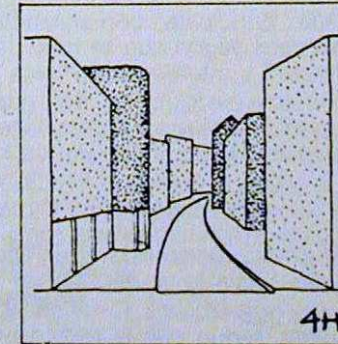
4E



4F



4G



4H



# SOMAKETAREN TEORIAK



## Construcción de Ciudades según principios artísticos

por

**CAMILO SITTE**

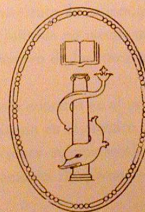
Arquitecto Director de las  
"Höheren baugewerblichen Lehranstalten" de Viena

Traducción de la quinta edición alemana

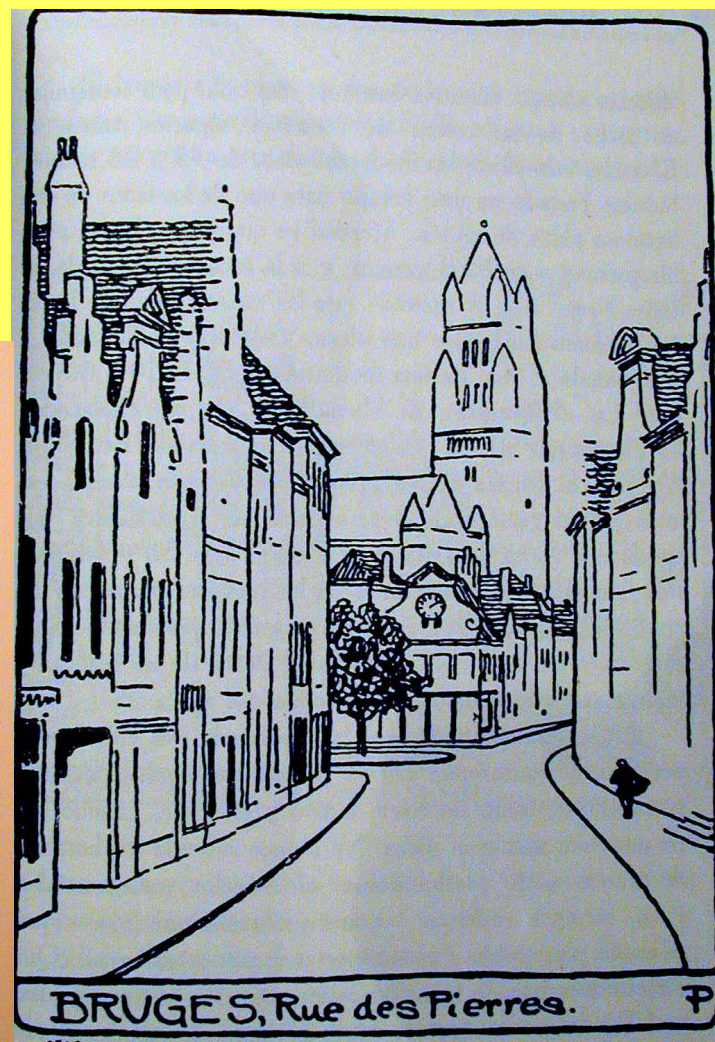
por

**Emilio Canosa**

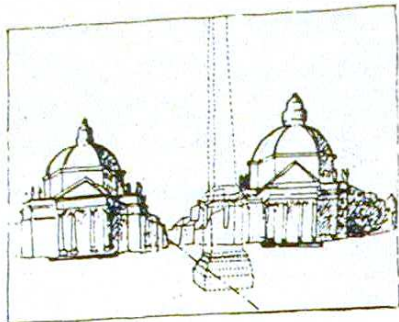
Arquitecto



EDITORIAL CANOSA  
BARCELONA  
Rosellón, 207



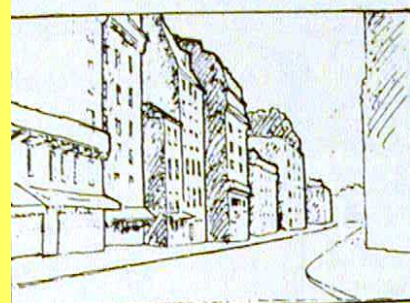




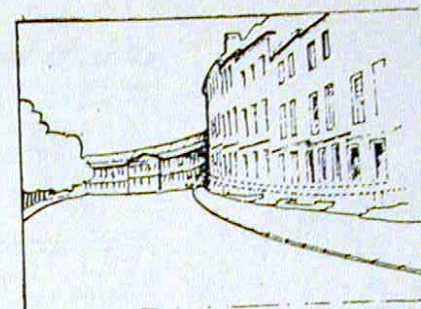
1a La Simetría



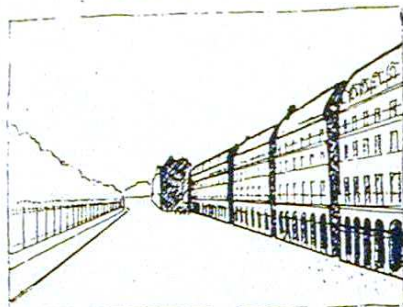
1b Disimetría



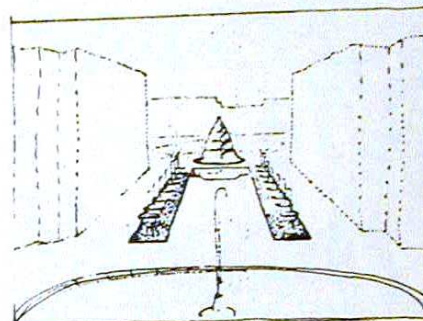
5a Perfiles



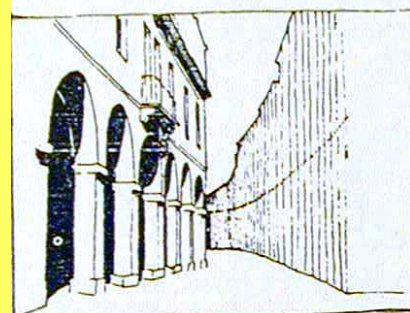
5b Ondulaciones



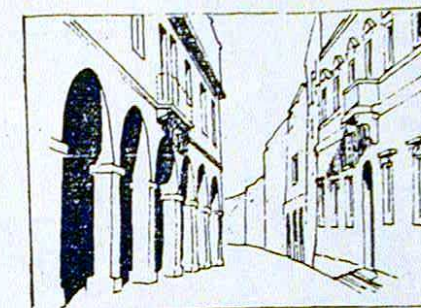
2a Definición lateral



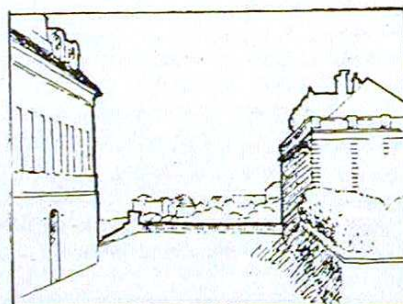
2b Definición central



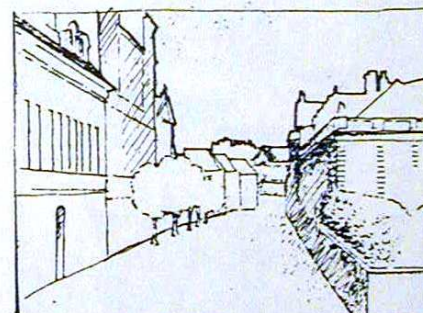
6a Diferencia



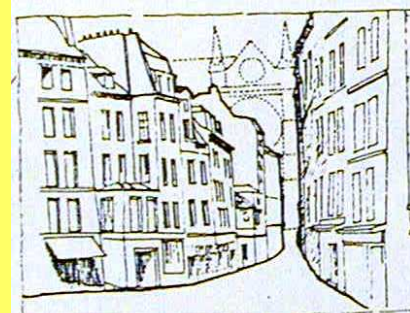
6b Competición



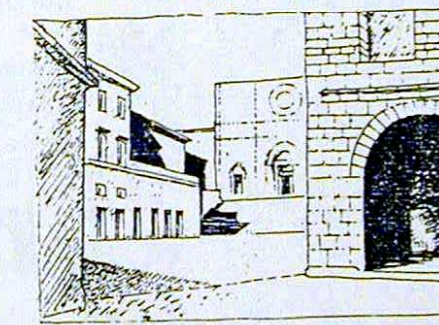
3a Apertura



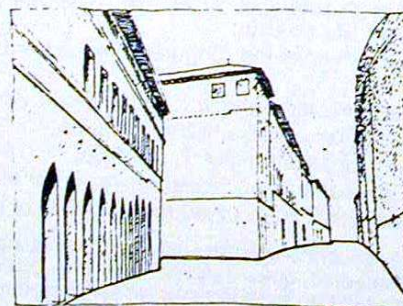
3b Cierre



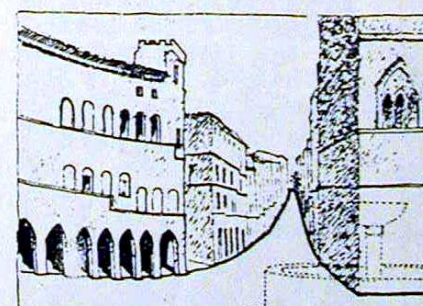
7a Estrechamiento



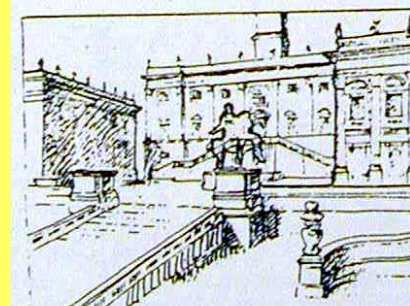
7b Bastidores



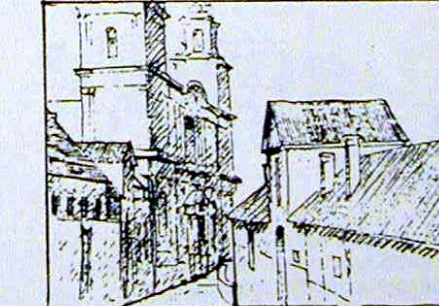
4a Convexidad



4b Concavidad

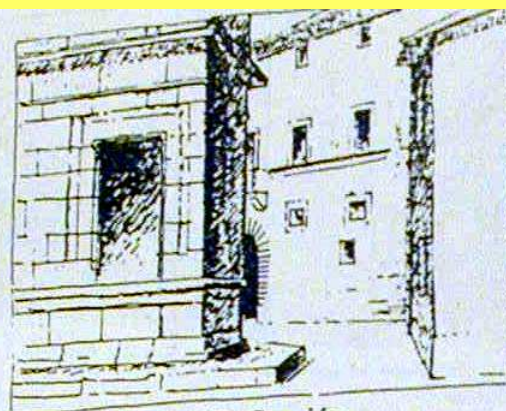


8a Valorización

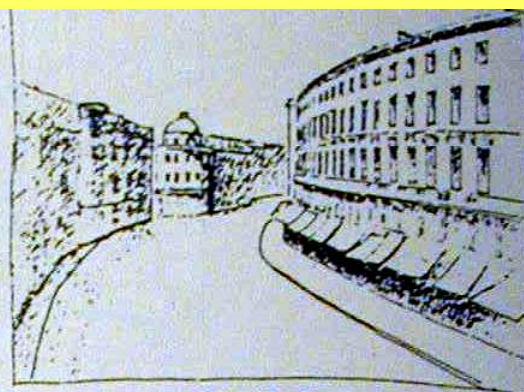


8b Entrada escondida

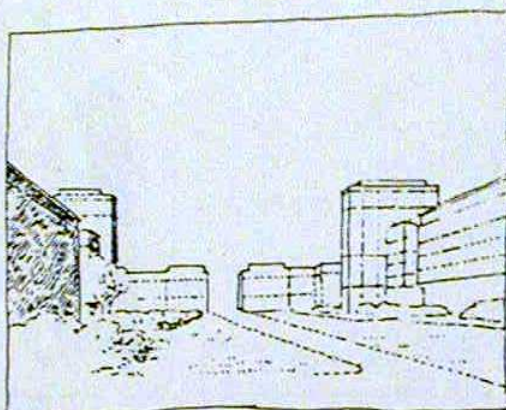




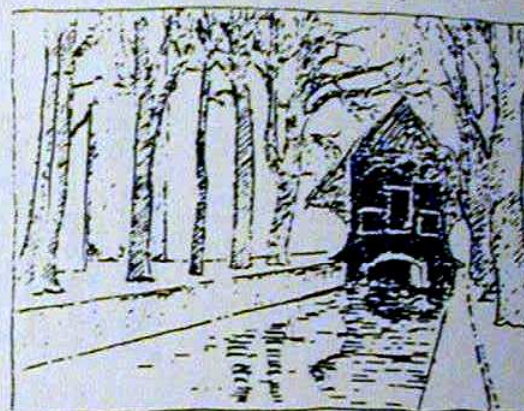
9a Deflacción



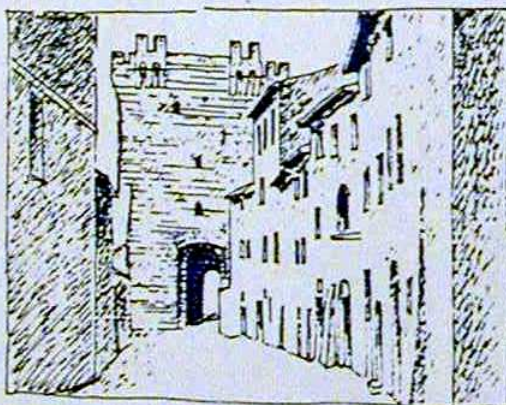
9b Reflexión



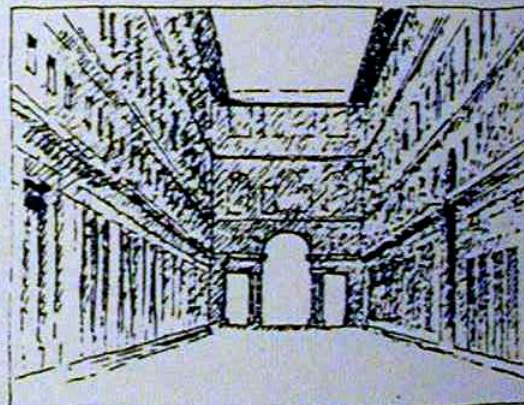
10a Deslinde lateral



10b Deslinde axial



11a Diafragma 1



11b Diafragma 2



# EGUNGO HIRI INGURUEN ERREALITATEA





